

PhraSEarch – Ready to help you discover treasures from the Word of God on your PC

Now that you have this wealth of Bible study information at your fingertips after installing the Bible Ministries application, is there a quick way you find that nugget of truth that you're looking for?

You bet! We've included an application called phraSEarch with this Bible study information which can be your key to simplify finding the topic you're investigating.

PhraSEarch performs Google-styled searches on user-selected folders on your hard drive. It rapidly searches through *.html, *.doc, *.ppt, *.txt, and *.rtf files in those selected folders and provides you with a link to the documents where that key word or phrase appears. (Note that PDF files are not included in the search.)

But that's not all ... It also pulls the context before and after the key word(s)/phrase so you can quickly see if that document includes just a mention of the word or if it goes into more detail about the key word/doctrine that you've searched for.

For example, here are a couple of results from a search on Clough folders about the doctrine of kenosis (which contained an estimated 50 results):

Clough_Kenosis

C:\Bible_Srch\Pastors\Clough\Framework\Clough_Framework_178.htm

Biblical Framework Charles Clough Lesson 178 We're going to move from the life of Christ to the notes that we left off with last spring. Just so we can kind of get the big picture, we've looked at the life of Christ; last week we went over the doctrines of **kenosis** and impeccability. We want to recall what some of those doctrines say and what the implications are for us as believers. The first one, **kenosis**, is the Greek word to humble, to be humble. It comes from Phil. 2:5-8 and the meaning of **kenosis** is that the Lord Jesus Christ gave up the voluntary use of His divine attributes. In other words, before He would exercise any of His divine attributes while on earth, He would have to ask the Father's permission to do that. So there's a subordination within the Trinity, from the Father, the Son and the Holy Spirit. And it was revealed during the earthly ministry of Jesus through **kenosis**, through the **doctrine of kenosis**. You want to remember that the word "**kenosis**" has had in some chapters of church history a bad connotation. Sometimes I hesitate to use the word because liberals have argued that **kenosis** means something else. They have argued that **kenosis** means Jesus Christ wasn't fully God, and that's not what we're saying. We're saying He's like a lamp with a lampshade on, and before you could take the lampshade off so you could see the glory of the bulb, He would have to have the Father's permission to do that. He also could not do that in His trials with Satan. Jesus Christ had to meet the trials of Satan as a man, with only the assets of His humanity as that humanity was empowered by the Holy Spirit. So in effect, Jesus becomes the "tester" of the Christian way of life. He, as it were, put the Christian modus operandi, filling of the Holy Spirit, under severe combat conditions; He put it under pressure far exceeding any pressure that we would ever encounter. So in that sense you can look upon Jesus as a test pilot or a tester, an engineer who tests the endurance of products. The **kenosis doctrine** spells out the fact that the Lord Jesus Christ fulfilled the role of Adam perfectly. We said there were four applications of **kenosis**. Number one, it shows the basic virtue in Christianity, which is not love, it is not power, it is not courage. Those may be there, but those aren't the basic; the basic virtue in Christianity is humility before God, a respect for Him. The second application is that the subordination of the Son to the Father proves that subordination of roles does not imply inferiority of essence. Let me run that by again: subordination of roles does not imply inferiority of essence. When you look at that statement carefully, you realize that the only way you can counter it is to deny the Trinity. Subordination of roles does not imply inferiority of essence; if it did, then Jesus wasn't God. This has important ramifications because the Trinity now becomes the archetype, the source, the origin, the pattern, of all authority, whether it's authority of roles in the home, whether it's authority of roles in the state. Just because, with all due respect to the feminists, just because God has invested the man as the head of the home, and not the woman, does not mean that the woman is inferior in value, scope, or any way else to the man, because if she is, then the Trinity is upset again. In the civil environment we obey leaders. Does that mean that the President is worth more in his humanity than any of you are?

he light came into the world and men loved darkness rather than light." There's the Biblical answer, "men loved darkness rather than light," and don't "come to the light lest their deeds be reproved." It's not due to some intellectual problem, it's due to the fact that men love darkness. We have to keep that in mind and that's why the diagram is there. It's the pagan worldview that has as its purpose, ultimately, to try to create the synthetic world that is safe for the sinner; a synthetic world that's a dream world, in which God doesn't really exist. The God of Scripture doesn't really exist inside this mythical synthetic world. We're going to go on to the first of three doctrines: **kenosis**, impeccability and infallibility. All three of these ideas come spinning out of the life of the King, just as the doctrine of the hypostatic union, the fact that Jesus Christ is God and man comes out of the fact that He entered into the world through the virgin birth. The major passage in Scripture for this doctrine is Phil. 2. I think it would be good if we started with the text in Phil. 2:5-8, go through the text and then come back to some of these verses in the notes. A familiar passage, Phil. 2:5-8, is very challenging. It's one of those passages that you can read quickly, hastily and on the surface, and get a reasonable idea of the big picture. But the moment you begin to scratch a little deeper, you realize that there's quite a thick basis there, there's quite a detailed foundation and one that really challenges you to think through carefully. Follow in your translation: "Have this attitude in yourselves which was also in Christ Jesus, [6] who, although He existed in the form of God, did not regard equality with God a thing to be grasped, [7] but emptied Himself, taking the form of a bondservant, and being made in the likeness of men. [8] And being found in appearance as a man, He humbled Himself by becoming obedient to the point of death, even the death on a cross. [9] Therefore, also God highly exalted Him, and bestowed on Him the name which is above every name, [10] that at the name of Jesus every knee should bow, of those who are in heaven, and on

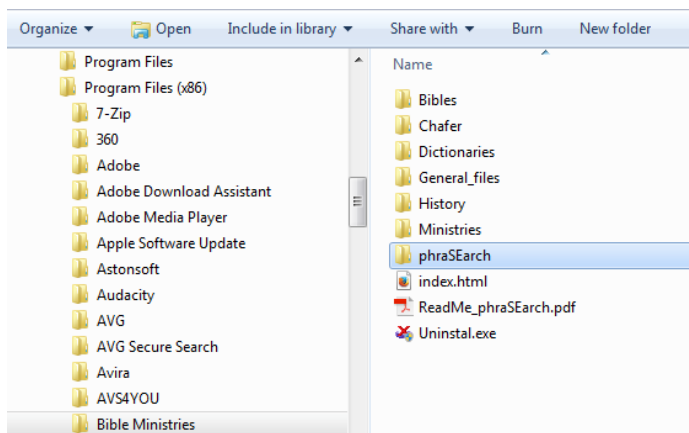
You can see that the first extraction goes into much more detail about kenosis than the second one and would be a better choice if you wanted to drill down and get more information on the subject. If you had run this search shown above on your PC, you could click the blue link above and it would take you to that document on your PC where you could view the entire transcript. (You can view the actual results on kenosis in the **Topical** folder contained within the **phraSEarch** folder by double clicking on the Clough_Kenosis.htm file.)

This application is very flexible and allows you to set the number of characters that the software presents before and after the key word(s). Customize it to your heart's content.

You can search through all the documents contained on the Bible Ministries application by selecting the **Bible Ministries** folder (under the default c:\Program Files (x86) folder). Or, you can drill down and see what each of the Bible teachers communicates by selecting their folder. (Note: If you want to search Clough's Framework transcripts for a particular topic, you need to select the Framework folder, not the Clough folder). You can also use this application to search other documents on your hard drive as well.

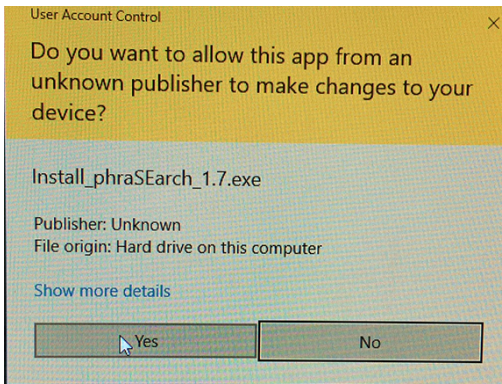
Installation

Open Windows/File Explorer and navigate to the **Bible Ministries** folder (under the default c:\Program Files (x86) folder). Double click **Bible Ministries** and you should see a list of folders in the right pane that includes **phraSEarch**. Double click the **phraSEarch** folder icon.



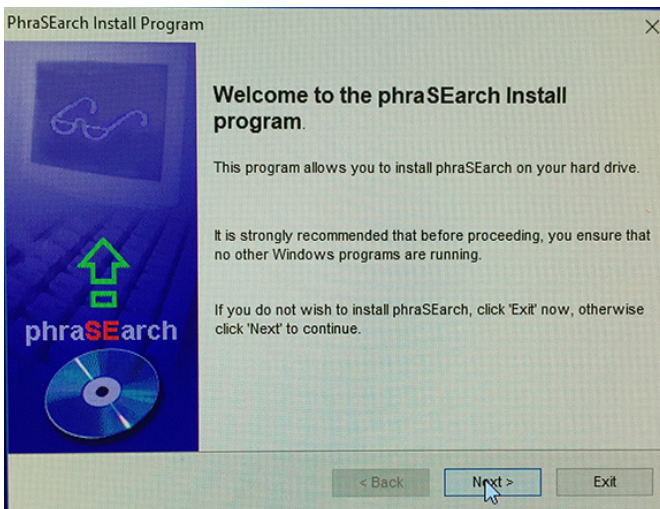
You should now see a file called **Install_phraSEarch_1.7.exe**. Double click it to begin the installation process.

A message like this will probably appear:



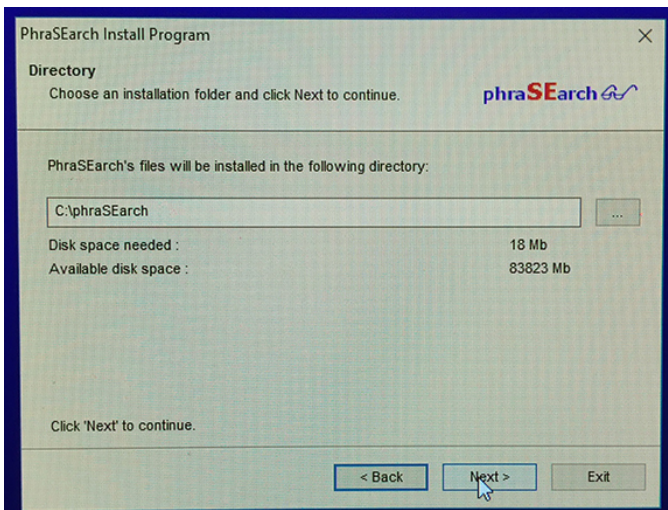
Click Yes.

Next the following popup window should appear:



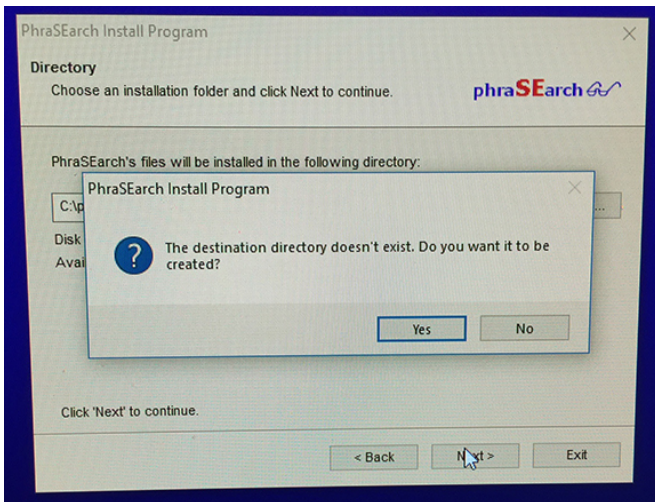
Click Next >

In the next popup window it will ask you where you'd like to install the phraSEarch program. It's recommended that you select the default option (C:\phraSEarch).



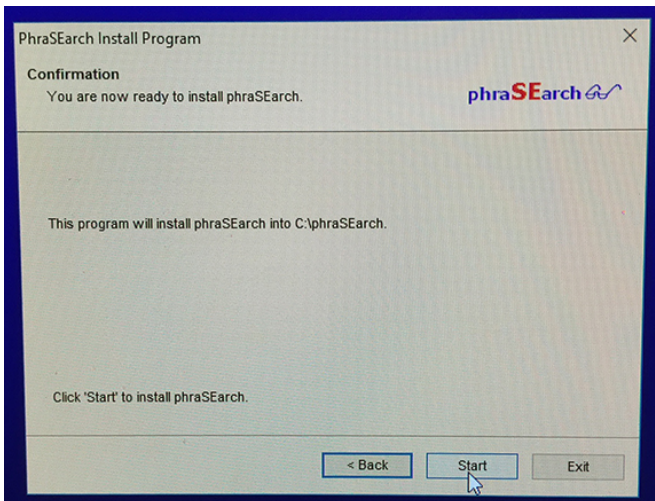
Then click Next > to continue.

You probably don't have a phraSEarch directory on your PC so the software will want you to confirm it's OK to create the directory.



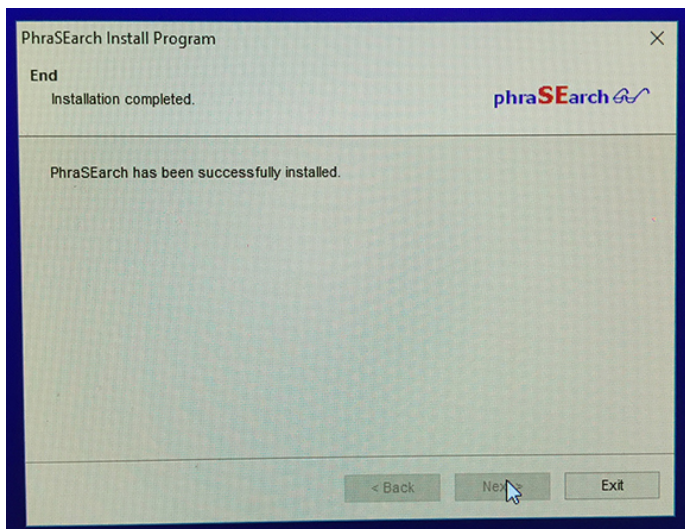
Click Yes.

In the next popup window click Start to begin the actual installation process.



This installation is much quicker than the Bible Ministries application.

Once the installation is complete, you will see the following pop-up window:



Congratulations! You've completed the installation of phraSEarch. To use the application, click on the Start icon in the lower left corner of your display and click on the phraSEarch folder/icon and start the application. Or, look for the phraSEarch icon on your desktop and double click it.

There is a tutorial included with the phraSEarch that will walk you through how to use phraSEarch. Click on **Help** → **Tutorial** to access it.

The Bible Ministries Application Development Team

Ps 26:7, "That I may publish with the voice of thanksgiving, and tell of Thy wondrous works."